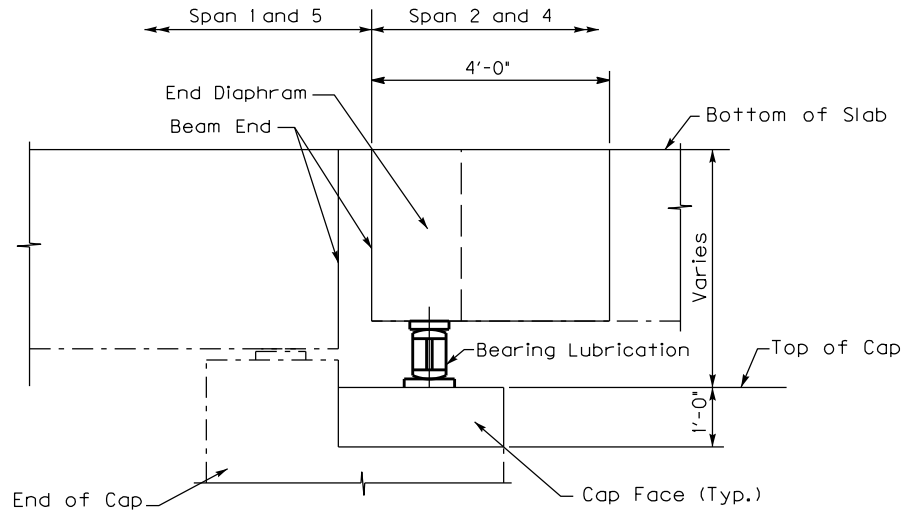


SECTION THROUGH END BENT AND BEAM END



SECTION THROUGH PIER CAP

PREVENTIVE MAINTENANCE

Note: Top and face of cap the entire length including cap ends and the front face of end bent end wall shall be cleaned and have concrete coating applied as specified within the limits shown. Areas between the front face of end wall and beam ends will require bridge cleaning and concrete coatings as accessibility allows. Lubricate bearings as specified.

BRIDGE NO.
012B00006N
012B00011N

Note: See Special Notes

| |
|--|
| Commonwealth of Kentucky DEPARTMENT OF HIGHWAYS |
| COUNTY BRACKEN |
| PREVENTIVE MAINTENANCE |
| PREPARED BY Division of Maintenance |
| Bridge Preservation Branch |